

COMMUNICATIONS
ALLIANCE LTD



AUSTRALIAN STANDARD

AS/ACIF S043.3:2008

Requirements for Customer Equipment for
connection to a metallic local loop interface of a
Telecommunications Network—
Part 3: DC, low frequency AC and voiceband

Adopted for
regulatory purposes



Australian Standard – Requirements for Customer Equipment for connection to a metallic local loop interface of a Telecommunications Network— Part 3: DC, low frequency AC and voiceband

This Standard was issued in draft form for public comment as DR AS/ACIF S043.3:2007.

First published as AS/ACIF S043.3:2001

ISBN: 1 74000 380 2

Communications Alliance Ltd was formed in 2006 to provide a unified voice for the Australian communications industry and to lead it into the next generation of converging networks, technologies and services. ACIF is a division of Communications Alliance.

Disclaimers

1. Notwithstanding anything contained in this Standard:
 - (a) Communications Alliance disclaims responsibility (including where Communications Alliance or any of its officers, employees, agents or contractors has been negligent) for any direct or indirect loss, damage, claim, or liability any person may incur as a result of any:
 - (i) reliance on or compliance with this Standard;
 - (ii) inaccuracy or inappropriateness of this Standard; or
 - (iii) inconsistency of this Standard with any law; and
 - (b) Communications Alliance disclaims responsibility (including where Communications Alliance or any of its officers, employees, agents or contractors has been negligent) for ensuring compliance by any person with this Industry.
2. The above disclaimers will not apply to the extent they are inconsistent with any relevant legislation.

Copyright

© Commonwealth of Australia 2005

This work is copyright. Apart from any use as permitted under the Copyright Act 1968, no part may be reproduced by any process without prior written permission from the Commonwealth available from AusInfo. Requests and inquiries concerning reproduction and rights should be addressed to the Manager, Legislative Services, AusInfo, GPO Box 1920, Canberra ACT 2601 or by email to cwealthcopyright@dofa.gov.au.

FOREWORD

General

This Standard was prepared by Communications Alliance and most recently revised by the WC07 : VDSL2 Working Committee. It is one of a series of Telecommunication Standards developed under the Memorandum of Understanding between the Australian Communications Authority (ACA) and the Australian Communications Industry Forum.

Note: On 1 July 2005 the ACA became the Australian Communications and Media Authority (ACMA) and the Memorandum of Understanding continues in effect as if the reference to the ACA were a reference to ACMA.

This Standard is a revision of AS/ACIF S043.3:2001 *Requirements for Customer Equipment for connection to a metallic local loop interface of a Telecommunications Network— Part 3: DC, low frequency AC and voiceband* Standard.

This Standard is the result of a consensus among representatives on the Communications Alliance Working Committee to produce it as an Australian Standard.

The requirements in this Standard are consistent with the aims of s376 of the *Telecommunications Act 1997*. Specifically these aims are—

- (a) protecting the integrity of a telecommunications network or facility;
- (b) protecting the health and safety of persons;
- (c) ensuring access to emergency services; and
- (d) ensuring interoperability with a standard telephone service.

It should be noted that some Customer Equipment (CE) may also need to comply with requirements in other Standards or other Parts of this Standard.

AS/ACIF S043 consists of the following parts under the general title *Requirements for Customer Equipment for connection to a metallic local loop interface of a Telecommunications Network*:

- Part 1: *General*
- Part 2: *Broadband*
- Part 3: *DC, low frequency AC and voiceband*

Applicable electrical safety Standards and EMC Standards may apply under Commonwealth or State laws, or both.

Intellectual property rights

Equipment which is manufactured to comply with this Standard may require the use of technology which is protected by patent rights in Australia. Questions about the availability of such technology, under licence or otherwise, should be directed to the patent holder or Australian licensee (if known) or through enquiry at IP Australia which incorporates the Patent, Designs and Trade Marks and Offices. Further information can be found at www.ipaustralia.gov.au.

Standards revision

Australian Standards (AS/ACIF Standards) developed by the Australian Communications Industry Forum, a division of Communications Alliance, are updated, according to the needs of the industry, by amendments or revision. Users of AS/ACIF Standards should make sure that they possess the latest amendments or editions. Representations concerning the need for a change to this AS/ACIF Standard should be addressed to:

The Project Manager
Customer Equipment and Cable Reference Panel
Communications Alliance
PO Box 444
Milsons Point NSW 1565

Regulatory notice

This document has been made by ACMA as Telecommunications Technical Standard AS/ACIF S043.3–2008 under s376 of the *Telecommunications Act 1997*.

ACMA is a Commonwealth authority with statutory powers to impose requirements concerning telecommunications Customer Equipment and Customer Cabling.

ACMA requires Australian manufacturers and importers of specified items of Customer Equipment and Customer Cabling to establish compliance with Standards such as this. Items are required to be labelled to the applicable labelling notices.

Details on current compliance arrangements can be obtained from the ACMA website at <http://www.acma.gov.au> or by contacting ACMA below at:

Australian Communications and Media Authority
PO Box 13112
Law Courts PO
Melbourne VIC 8010
Australia

Telephone: +61 3 9963 6800

Facsimile: +61 3 9963 6899

TTY: +61 3 9963 6948

Introduction

This introduction for the AS/ACIF S043.3 *Requirements for Customer Equipment for connection to a metallic local loop interface of a Telecommunications Network—Part 3: DC, low frequency AC and voiceband* Standard is not an authoritative section of this Standard and is only provided as guidance for the user of the Standard to outline its objectives, and the factors that have been taken into account in its development and to list the principle differences between the new and the previous edition.

The reader is directed to the clauses of this Standard for the specific requirements and to the Australian Communications and Media Authority (ACMA) for the applicable telecommunications labelling and compliance arrangements.

Note: Further information on the telecommunications labelling and compliance arrangements can be found in *The Telecommunications Labelling (Customer Equipment and Customer Cabling) Notice* (the TLN). The TLN can be obtained from the Australian Communications and Media Authority (ACMA) website at www.acma.gov.au.

The objective of this Standard is to provide the requirements and test methods for customer equipment designed or intended for connection to a Telecommunications Network via a metallic local loop interface and is designed or intended to include one or more of the following:

- (i) DC power feeding or signalling.
- (ii) Operation in the low frequency AC band, below 300 Hz.
- (iii) Operation in the voice frequency band.
- (iv) Operation above the voice frequency band up to 20 kHz.

in order to meet the regulatory arrangements for such equipment in Australia.

The objective of this revision is to align existing power spectral density requirements with international recommendations on VDSL2 technology and to move into this Standard the existing requirements in AS/ACIF S043.2 for Equipment Classes operating in the voiceband.

The principal differences between this edition of AS/ACIF S043.3 and the previous edition are—

- (i) an update of Clauses 5.4.1 and 5.4.2, Table 1 and Figure 1 to extend the upper limit of the PSD mask from 12 MHz to 30 MHz; and
- (ii) the addition of Appendices A and B.

TABLE OF CONTENTS

1	INTERPRETATIVE GUIDELINES	1
	1.1 Categories of requirements	1
	1.2 Compliance statements	1
	1.3 Definitions, expressions and terms	1
	1.4 Notes	1
	1.5 References	1
	1.6 Units and symbols	1
2	SCOPE	2
3	REFERENCES	3
4	ABBREVIATIONS AND DEFINITIONS	4
	4.1 Abbreviations	4
	4.2 Definitions	4
	4.2.1 <i>Customer Cabling</i>	4
	4.2.2 <i>Customer Equipment (CE)</i>	4
	4.2.3 <i>Equipment Class</i>	4
	4.2.4 <i>Facility</i>	4
	4.2.5 <i>Telecommunications Network</i>	4
	4.2.6 <i>Voice Frequency (VF)</i>	4
	4.2.7 <i>Voiceband</i>	5
5	REQUIREMENTS	6
	5.1 DC signals	6
	5.2 Low frequency AC signals	6
	5.3 Voiceband signals	7
	5.4 Signals beyond 3.4kHz	7
	5.5 Longitudinal signals	8
6	TESTING	9
	6.1 Verification of compliance with requirements	9
	6.2 Standard test conditions	9
	6.3 Parameters to be tested	10
	6.3.1 <i>External Stimulus</i>	10
	6.3.2 <i>Impulse measurement</i>	10
	6.3.3 <i>Longitudinal power measurement</i>	10
	6.3.4 <i>VF signal level measurement</i>	11
	PARTICIPANTS	21

APPENDICIES

A	EQUIPMENT CLASS 3a	17
B	EQUIPMENT CLASS 3b	19

FIGURES

1	Power level limits above 3.4 kHz	13
2	Longitudinal power level limits	13
3	Test configuration for measurement of impulses caused by DC signals	14
4	Simulated exchange with termination (unbalanced representation)	14
5	Filter to approximate ITU-T Rec. O.71 [7]	15
6	Test circuit for measurement of longitudinal power level	15

TABLES

1	PSD measurement parameters for 300 kHz to 30 MHz	8
A1	Test criteria for Equipment Class 3a	17
A2	Group B PSD mask for Equipment Class 3a	18
B1	Test criteria for Equipment Class 3b	19
B2	Group B PSD mask for Equipment Class 3b	20

1 INTERPRETATIVE GUIDELINES

1.1 Categories of requirements

This Standard contains mandatory requirements as well as provisions that are recommendatory only. Mandatory requirements are designated by the words '**shall**' or '**shall not**'. All other provisions are voluntary.

1.2 Compliance statements

Compliance statements, in italics, suggest methodologies for demonstrating CE's compliance with the requirements.

1.3 Definitions, expressions and terms

If there is any conflict between the definitions used in this Standard and the definitions used in the *Telecommunications Act 1997*, the definitions in the Act take precedence.

1.4 Notes

Text denoted as 'Note' is for guidance in interpretation and is shown in smaller size type.

1.5 References

- (a) Applicable editions (or versions) of other documents referred to in this Standard are specified in Section 3: REFERENCES.
- (b) If a document refers to another document, the other document is a sub-referenced document.
- (c) Where the edition (or version) of the sub-referenced document is uniquely identified in the reference document, then that edition (or version) applies.
- (d) Where the edition (or version) of the sub-referenced document is not uniquely identified in the reference document, then the applicable edition (or version) is that which is current at the date the reference document is legislated under the applicable regulatory framework, or for a non- legislated document, the date upon which the document is published by the relevant standards organisation.
- (e) A number in square brackets '[']' refers to a document listed in Section 3: REFERENCES.

1.6 Units and symbols

In this Standard the International System (SI) of units and symbols is used in accordance with Australian Standard AS ISO 1000 [1].

2 SCOPE

2.1 This Standard applies to Customer Equipment (CE) that is designed or intended for connection to:

- (a) is designed or intended for connection to a Telecommunications Network via a metallic local loop interface; and
- (b) is designed or intended to include one or more of the following capabilities:
 - i. DC power feeding or signalling.
 - ii. Operation in the low frequency AC band, below 300 Hz.
 - iii. Operation in the voice frequency band.
 - iv. Operation above the voice frequency band up to 20 kHz.

2.2 CE is not excluded from the scope of this Standard by reason only that it is capable of performing functions additional to those described in this Standard.

Note: Requirements for CE designed or intended to interwork with the PSTN for DC loop seizure and clearing, low frequency AC ring signalling, and decadic or DTMF address signalling etc. are defined in AS/ACIF S002 [3].

3 REFERENCES

	Publication	Title
	Australian Standards	
[1]	AS ISO 1000-1998	The international System of Unit (SI) and its application.
[2]	AS/NZS 60950.1:2003	Information Technology Equipment - Safety
	AS/ACIF Standards	
[3]	AS/ACIF S002:2005	Analogue interworking and non-interference requirements for Customer Equipment for connection to the Public Switched Telephone Network
	AS/ACIF S043	Requirements for Customer Equipment for connection to a metallic local loop interface of a Telecommunications Network
[4]	AS/ACIF S043.1:2003	Part 1: General
[5]	AS/ACIF S043.2:2008	Part 2: Broadband
	ITU-T Recommendations	
[6]	O.41 (10/94)	Psophometer for use on telephone-type circuits
[7]	O.71 (11/88)	Impulsive noise measuring equipment for telephone-type circuits
[8]	Q.45 bis (11/88)	Transmission characteristics of an analogue international exchange
	ANSI Standards	
[9]	T1.601-1999(R2004)	Integrated Services Digital Network (ISDN) – Basic Access Interface for Use on Metallic Loops for Application at the Network Side of the NT, Layer 1 Specification

4 ABBREVIATIONS AND DEFINITIONS

For the purposes of this Standard, the following abbreviations and definitions and those of Part 1 apply:

4.1 Abbreviations

ACMA	Australian Communications and Media Authority
ACIF	Australian Communications Industry Forum
ANSI	American National Standards Institute
AS	Australian Standard
CE	Customer Equipment
DSL	Digital Subscriber Line
DTMF	Dual Tone Multifrequency
ISO	International Organization for Standardization
ITU-T	International Telecommunications Union – Telecommunication Standardization Sector
PSD	Power Spectral Density
PSTN	Public Switched Telephone Network
RMS	Root Mean Square
TNV	Telecommunication Network Voltage
VF	Voice Frequency

4.2 Definitions

4.2.1 Customer Cabling

Refer to Section 20 of the *Telecommunications Act 1997*.

Note: This covers both internal and external cable of any type, e.g. metallic pair, screened metallic pair, coaxial or optic fibre.

4.2.2 Customer Equipment (CE)

Refer to Section 21 of the *Telecommunications Act 1997*.

4.2.3 Equipment Class

Refer to Clause 4.2.2 of AS/ACIF S043.2 [5].

4.2.4 Facility

Refer to Section 7 of the *Telecommunications Act 1997*.

4.2.5 Telecommunications Network

Refer to Section 7 of the *Telecommunications Act 1997*.

4.2.6 Voice Frequency (VF)

Those signals nominally confined to frequencies in the range of 300 Hz to 3.4 kHz.

4.2.7 Voiceband

Refer to Clause 4.2.5 for voice frequency (VF) signals.

5 REQUIREMENTS

5.1 DC signals

If CE can deliver DC signals, the CE is to comply with the following requirements:

- (a) DC signals **shall not** exceed the TNV-3 limits specified in AS/NZS 60950.1 [2], when measured at the output terminals of the equipment on open circuit.
- (b) When DC signals are reversed in polarity for signalling, telemetry or metering purposes, the resulting impulses measured with an instrument incorporating a filter in accordance with ITU-T Rec. O.71 [7] **shall not** exceed a threshold level of -32 dBm.

Note: These requirements align with ITU-T Rec. Q.45 bis [8] for impulse noise.

Compliance with Clause 5.1.1 should be checked by using the methods described in Clauses 6.3.1 and 6.3.2.

5.2 Low frequency AC signals

If CE can deliver AC signals below 300 Hz, the CE is to comply with the following requirements:

- (a) AC signals up to 100 Hz delivered by the CE, including ringing signals, **shall not** exceed the TNV-3 limits specified in AS/NZS 60950.1 [2], when measured at the output terminals of the equipment on open circuit.
- (b) Signals between 100 Hz and 200 Hz delivered by the CE **shall not** exceed 10 V r.m.s. at the output terminals of the equipment on open circuit.
- (c) Signals between 200 Hz and 300 Hz delivered by the CE **shall not** exceed 5.0 V peak to peak at the output terminals of the CE on open circuit..
- (d) Levels of noise and distortion products generated by CE are to comply with the following:
 - i. With the exception of ring signals, for all AC signals below 100 Hz, noise and harmonics of the signals **shall not** exceed 774 mV Psophometric when terminated with 600 Ω measured using a device compliant with ITU-T Rec. O.41 [6].
 - ii. For ring signals, the noise and harmonics of the ring signals **shall not** exceed 774 mV Psophometric when terminated with the following loads, being—
 - A. an open circuit; and

- B. a 1 μ F capacitor in series with a 4 k Ω resistor.
- iii. For all signals between 100 Hz and 300 Hz, the peak power level of noise and distortion products above 3.4 kHz **shall** comply with the requirements of Clause 5.4.
- (e) The power level of individual spectral components of any longitudinal component of the output signals **shall not** exceed the limits shown in Figure 2.
- (f) AC currents delivered by the CE **shall not** exceed 100 mA under normal operating conditions.

Compliance with Clause 5.2 (b) and (c) should be checked by using the method described in Clause 6.3.4.1, without the 600 Ω termination.

Compliance with Clauses 5.2 (d)(i) and (ii) should be checked by using the method described in Clause 6.3.4.5.

Compliance with Clause 5.2 (d)(iii) should be checked by using the method described in Clause 6.3.4.4 with a termination of 600 Ω .

Compliance with Clause 5.2 (e) should be checked by using the method described in Clause 6.3.3.

Compliance with Clause 5.2 (f) should be checked by using an RMS reading ammeter.

5.3 Voiceband signals

- 5.3.1 The peak-to-peak level of signals transmitted to line **shall not** exceed 5.0 V when measured across a 600 Ω resistive termination.

Compliance with Clause 5.3.1 should be checked by using the method described in Clause 6.3.4.3.

- 5.3.2 The one-minute mean power level of signals transmitted to line within the frequency range 300 Hz to 3.4 kHz, except for speech and music, **shall not** exceed -10 dBm.

Compliance with Clause 5.3.2 should be checked by using the methods described in Clauses 6.3.4.1 and 6.3.4.2 with R in 6.3.4.1 set to 600 Ω .

- 5.3.3 The normal operating level of speech and music **shall not** exceed -6 VU.

Compliance with Clause 5.3.3 should be checked by using the methods described in Clauses 6.3.4.6.

5.4 Signals beyond 3.4kHz

- 5.4.1 The power spectral density (PSD) of signals beyond 3.4 kHz **shall not** exceed:

- (a) the limits in Figure 1 and Table A2 for CE complying with Equipment Class 3a; or
- (b) the limits in Figure 1 and Table B2 for CE complying with Equipment Class 3b

when measured using a noise power bandwidth of 10 kHz.

Compliance with Clause 5.4.1 should be checked by using the methods described in Clauses 6.3.4.1 and 6.3.4.4 (a) with R in Clause 6.3.4.1 set to 135 Ω .

5.4.2 The PSD of signals between 300 kHz and 30.175 MHz **shall** be either—

- (a) less than -120 dBm/Hz; or
- (b) more than 10 dB below the PSD limit shown in Figure 1 (represented by the dashed line).

when measured as the total average power within a 1 MHz sliding window (1 MHz bandwidth) which is described in Table 1.

Table 1

PSD measurement parameters for 300 kHz to 30 MHz

Parameter	Value
Bandwidth of sliding window	1 MHz
Reference frequency	Lower edge
Step Size	10 kHz
Start Frequency	300 kHz
Stop Frequency	29.175 MHz

Note 1: The Power Spectral Density requirements contained in Clause 5.4 are the same as in ANSI Standard T1.601 [9], and have been included to ensure spectral compatibility of CE with DSL CE.

Note 2: The purpose of the sliding window measurement is to ensure that CE does not generate noise up to the allowable limit across the entire band.

Compliance with Clause 5.4.2 should be checked by using the methods described in Clauses 6.3.4.1 and 6.3.4.4 (b) with R in 6.3.4.1 set to 135 Ω .

5.5 Longitudinal signals

The power level of individual spectral components of any longitudinal component of the output signals **shall not** exceed the limits shown in Figure 2.

Compliance with Clause 5.5 should be checked by using the methods described in Clauses 6.3.3.

6 TESTING

6.1 Verification of compliance with requirements

Compliance with all mandatory requirements in this AS/ACIF Standard is to be verified. This may be done by direct measurement, modelling and analysis, operation or inspection.

Methods for demonstrating compliance of CE with the requirements clauses specified in this Standard are described in Clauses 6.2 to 6.3.

Verification of compliance with the referenced standards may be confirmed by test reports to later versions of the referenced standards provided that all clauses of the referenced standards are shown to be met.

Alternative methods of demonstrating compliance to those described may be used if the risk of passing non-compliant CE is not increased because of increased measurement uncertainty.

6.2 Standard test conditions

6.2.1 Unless this Standard provides otherwise, testing for compliance with this Standard should be conducted at the nominal supply voltage of the CE and within the following ranges of atmospheric conditions:

- (a) An ambient temperature in the range of 15°C to 25°C inclusive.
- (b) A relative humidity in the range of 45% to 75% inclusive.
- (c) An air pressure in the range of 86 kPa to 106 kPa inclusive.

6.2.2 Where elements in a test configuration are variable, the test should be carried out over the indicated range for that element.

6.2.3 Unless indicated elsewhere within this Standard—

- (a) the accuracy level of all measurements should be better than $\pm 2\%$ for voltage and current, $\pm 0.25\%$ for frequency and $\pm 0.5\%$ for time; and
- (b) the tolerance of the nominal 48 V d.c. test source should be ± 0.5 V.

6.2.4 Unless indicated elsewhere within this Standard for an individual test, all component values in the test configuration should have a tolerance of—

- (a) $\pm 1\%$ for resistance;
- (b) $\pm 1\%$ for capacitance; and
- (c) -0% , $+25\%$ for inductors.

6.3 Parameters to be tested

6.3.1 External Stimulus

6.3.1.1 The requirements specified in Clause 5 should be met in the normal operating modes of the CE unless as otherwise specified.

6.3.1.2 In some CE the power level presented to line is dependent on excitation either internal or external to the equipment. This excitation may be determined from the appropriate product specification or with some CE this will require the connection of the associated CE to provide the stimulus.

6.3.1.3 Compliance with Clause 5 should be checked by performing this excitation then measuring the line signal as described by the appropriate tests.

6.3.1.4 Methods for external stimulus and excitation of the CE include the following:

- (a) If the CE includes a voice frequency recording and reproducing element in which the signal recording is achieved either by the user or from signals injected into the recording element from the network, the supplier should provide documentation for the user describing how the power levels of signals transmitted to the network are controlled.
- (b) If the signal level control is achieved by means of limiters, this should be checked by injecting voice frequency signals, where indicated in the documentation, at any level necessary to test that the limiters are restricting the signals to the network to the specified required limits.
- (c) If the CE generates a modulated VF signal in response to an external stimulus initiated by the user, the supplier should provide documentation for the user describing the operating conditions and any associated signal generating devices.

6.3.2 Impulse measurement

6.3.2.1 Impulses caused by the reversal of DC signals described in Clause 5.1 can be measured with a standard impulse counter set having a high impedance (greater than 100 k Ω // 30 pF) bridged across the line.

6.3.2.2 Figure 3 shows the test configuration. Figure 4 shows the approximate representation of an exchange termination and Figure 5 shows the circuit diagram of a filter which meets the requirements of ITU-T Rec. O.71 [7].

6.3.3 Longitudinal power measurement

The CE under test should be connected to the measuring instrument as shown in Figure 6. A selective measuring set or spectrum analyser having an effective bandwidth sufficiently narrow to measure individual spectral components should be used to explore the frequency band from 200 Hz to 30.175 MHz and to measure the RMS

voltage (V) of any spectral component either using the internal calibration or from comparison with a sinusoidal signal of known RMS voltage and the same frequency.

6.3.4 VF signal level measurement

6.3.4.1 Signal levels and frequencies should be measured using a selective level meter or spectrum analyser with appropriate input dynamic range and frequency range. Power levels specified in Clauses 5.3, 5.4 and 5.5 should be determined as V^2/R , the voltage level being measured with a high impedance RMS voltmeter bridged across R, the termination resistor (nominally 600 Ω unless otherwise specified).

6.3.4.2 For the one-minute mean power level measurements, the voltmeter should have the following elements:

- (a) An input band-selection filter with passband 300 Hz to 3.4 kHz.
- (b) A square-law detector having a time constant of nominally 100 ms.
- (c) An averaging circuit that performs a continuing averaging process over a period of one minute, i.e., computes the value of:

$$\frac{1}{60} \int_{T_n}^{T_n+60} V^2 dt$$

where: T_n is time in seconds

V is the RMS voltage indicated by the square-law detector, in volts.

The measurement should be carried out for a sufficient time for the averaging circuit to record a steady value.

Note: In practice, when measuring telephone speech or sustained signals from modems it may be convenient to observe the indication of the square-law detector and then to calculate the one-minute mean value.

6.3.4.3 For determining the measurement of peak-to-peak voltage required by Clause 5, a storage oscilloscope with a minimum bandwidth of DC to 30.175 MHz should be used.

6.3.4.4 Power Spectral Density should be measured using the following:

- (a) A 10 kHz noise power bandwidth for frequencies between 3.4 kHz and 30.175 MHz.
- (b) A 1 MHz noise power bandwidth for frequencies between 300 kHz and 30.175 MHz as described in Clause 5.4.2.

6.3.4.5 Psophometric voltage measurements.

- (a) Measurement of the psophometric content of signals for Clause 5.2 (d)(i) should be performed using a psophometer in accordance with ITU-T Rec. O.41 [6] set to the weighted, 600 Ω terminated mode.

(b) Measurement of the psophometric content of signals for Clause 5.2 (d)(ii) should be performed using a psophometer in accordance with ITU-T Rec. O.41 [6] set in turn to—

- i. the weighted, unterminated mode; and
- ii. the weighted, unterminated mode but with an external termination of 1 μ F in series with 4 k Ω .

Note: Suitable blocking capacitors may be necessary in the test configuration to prevent DC flowing through the psophometer.

6.3.4.6 The level of speech or music as required by Clause 5.3.3 should be measured using a VU meter with characteristics in accordance with AS/ACIF S004 [4] Appendix A.

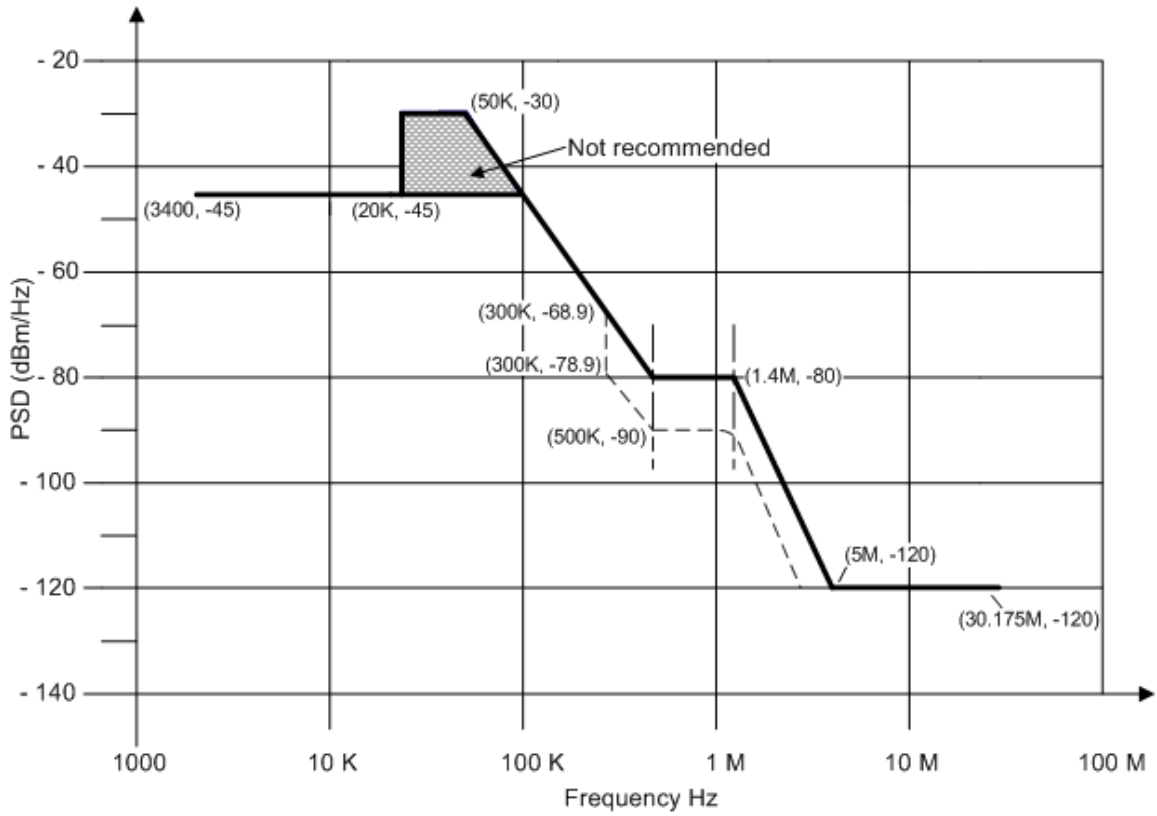


Figure 1
Power level limits above 3.4 kHz

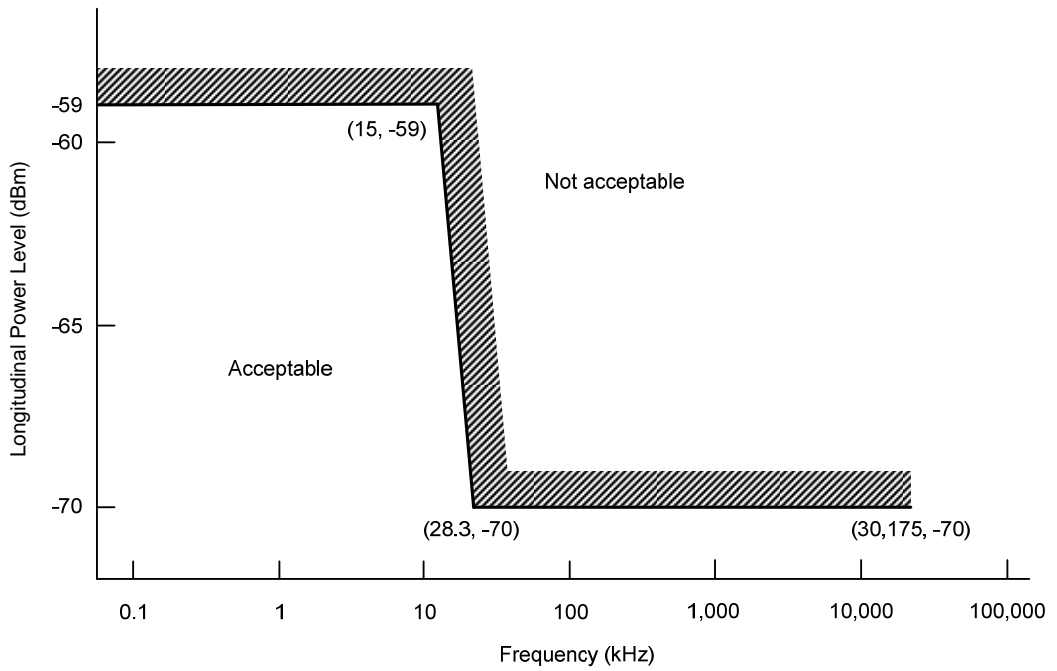
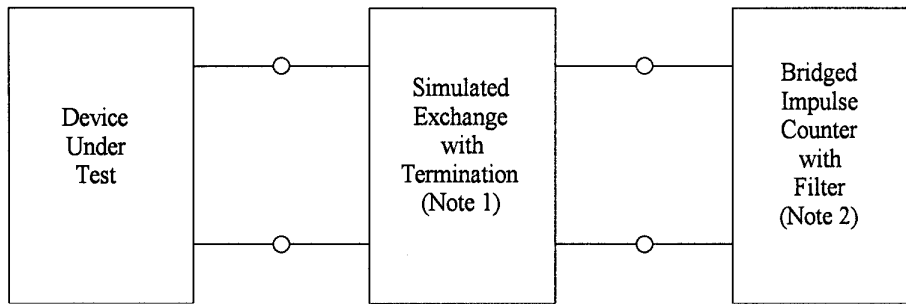


Figure 2
Longitudinal power level limits



Note 1: Typical Circuit As shown in Figure 6.

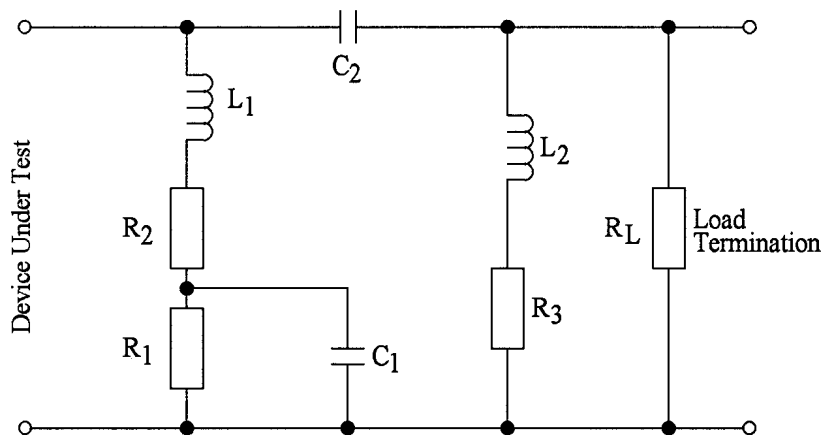
Note 2: Typical Filter Circuit As shown in Figure 7.

Note 3: All measurements to accuracy better than:

- ± 2% voltage and current,
- ± 0.5% time,
- ± 0.25% frequency,
- ± 0.2 dB power level.

Figure 3

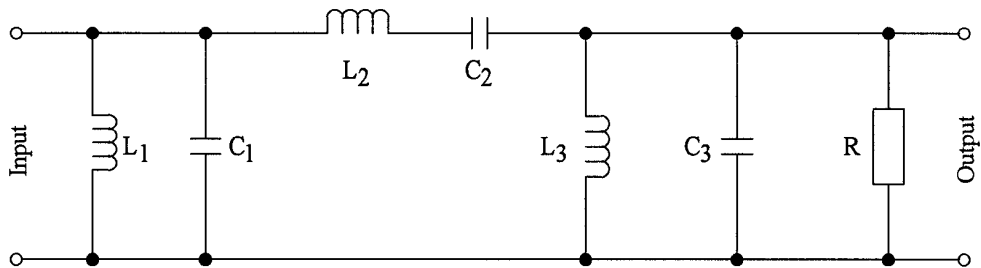
Test configuration for measurement of impulses caused by DC signals



- $L_1 = 4 \text{ H} \pm 20\%$ up to 125 mA d.c. over the range 100 Hz to 4000 Hz
- $L_2 = 2 \text{ H} \pm 20\%$ up to 125 mA d.c. over the range 100 Hz to 4000 Hz
- $R_1 = 560 \text{ } \Omega \pm 2\%$
- $R_2 = 172 \text{ } \Omega \pm 2\%$
- $R_3 = 400 \text{ } \Omega \pm 2\%$
- $R_L = 600 \text{ } \Omega \pm 2\%$
- $C_1 = 10 \text{ } \mu\text{F} \pm 2\%$
- $C_2 = 1 \text{ } \mu\text{F} \pm 2\%$

Figure 4

Simulated exchange with termination (unbalanced representation)



- R = 800 Ω ± 2%
- C₁ = 121 nF ± 2%
- C₂ = 938 nF ± 2%
- C₃ = 80.4 nF ± 2%
- L₁ = 300 mH ± 2%
- L₂ = 38.6 mH ± 2%
- L₃ = 450 mH ± 2%

Figure 5

Filter to approximate ITU-T Rec. O.71 [7]

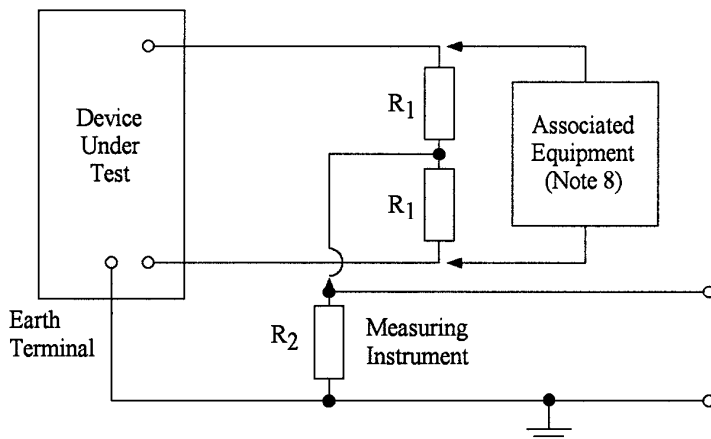


Figure 6

Test circuit for measurement of longitudinal power level

Note 1: If the equipment has separate protective and signal earth terminals they are connected together.

Note 2: The two resistors R1 are to be matched to within 0.01%.

Note 3: The measuring instrument is of high impedance, and capable of measuring over the frequency range 200 Hz to 30175 kHz.

Note 4: The measuring instrument is calibrated in dBm as if it was measuring across a resistive load.

Note 5: The adequacy of the balance is checked by repeating measurements with appropriate connection reversal, or equipment disconnection.

Note 6: The value of the resistors R1 and R2 are to be 300 Ω for CE signals with fundamental frequency components in the DC to 20 kHz range.

Note 7: The value of the resistors R1 and R2 are to be 70 Ω for CE signals with fundamental frequency components in the 3.4 kHz to 30175 kHz range when the CE is not being tested with any associated equipment.

Note 8: This figure does not show DC coupling, if required, of the test loads. This must be carefully considered to ensure correct longitudinal power level measurements and correct operation of the CE.

APPENDIX

A EQUIPMENT CLASS 3a

Table A-1 provides the Group B test criteria and referenced documents for Equipment Class 3a.

The test termination impedance for Equipment Class 3a is TN12 or 600 Ω as appropriate.

Technologies to which Class 3a applies are analogue PSTN lines or voiceband leasedlines for which:

- (a) all signalling is confined to either DC to 3.4 kHz or 300 Hz to 3.4 kHz; and,
- (b) does not use any earth referenced signalling such as E&M or longitudinal AC or DC.

Examples of services using CE within this Equipment Class are PSTN POTS without Customer Loop Metering, PSTN LoopIn/Indial lines, voiceband leased lines using dry circuits.

These are compatible with (may be deployed on the same line as) ADSL/VDSL.

Table A1
Test criteria for Equipment Class 3a

Parameter	Sub-parameter	Group A (Value)	Group B
Total average power	Level		-10 dBm0 (300 Hz to 3.4 kHz)
	Frequency range		0 to 3.4 kHz or 300 Hz to 3.4 kHz
	Averaging time		≥ 10 s
PSD mask			AS/ACIF S002:2008 or AS/ACIF S006:2008
Line code			Not Applicable

Table A2
Group B PSD mask for Equipment Class 3a

Frequency band f (kHz)	PSD (dBm/Hz)	Testing Requirements
$3.4 < f < 100$	-45	PSD
$100 \leq f < 500$	$-45 - 15.074 \times \log_2(f / 100)$	PSD
$500 \leq f < 1400$	-80	PSD
$1400 \leq f < 5000$	$-80 - 27.226 \times \log_2(f / 1400)$	PSD
$5000 \leq f < 29040$	-120	PSD
$29040 \leq f < 30175$	-120	PSD

Note 1: PSD requirements for Equipment Class 3a are contained in AS/ACIF S002:2005, AS/ACIF S006:2001 and this Standard.

Note 2: Refer to Figure 1 for a representation of the PSD.

Note 3: Below 300 kHz the peak PSD shall be measured with a 100 Hz resolution bandwidth. Above 300 kHz the peak PSD shall be measured with a 10 kHz resolution bandwidth.

APPENDIX

B EQUIPMENT CLASS 3b

Table B-1 provides the Group B test criteria and referenced documents for Equipment Class 3b. The test termination impedance for Equipment Class 3a is TN12 or 600 Ω or other specified impedances as appropriate.

Technologies to which Class 3b applies are analogue PSTN lines, voiceband or audio leased lines for which:

- (c) all signalling is confined to the range DC to 20 kHz;
- (d) may use earth referenced signalling such as E&M or longitudinal AC or DC;
- (e) may use outband signals above the voiceband.

Examples of services using CE within this Equipment Class are PSTN POTS with Customer Loop Metering, PSTN/centrex Pphone lines, voiceband leased lines using E&M signalling.

These services are incompatible with services using CE in Equipment Classes 6a to 6h and 10a to 10n in ASACIF S043.2 [5] (i.e. not to be used on the same line as ADSL and VDSL).

Table B1
Test criteria for Equipment Class 3b

Parameter	Sub-parameter	Group A (Value)	Group B
Total average power	Level		-10 dBm0 (300 Hz to 3.4 kHz)
	Frequency range		0 to 20 kHz or 0 Hz to 3.4 kHz
	Averaging time		≥ 10 s
PSD mask			AS/ACIF S002:2008 or AS/ACIF S043.3:2008
Line code			Not Applicable

Table B2
Group B PSD mask for Equipment Class 3b

Frequency band f (kHz)	PSD (dBm/Hz)	Testing Requirements
$3.4 < f < 100$	-45	PSD
$100 \leq f < 500$	$-45 - 15.074 \times \log_2(f / 100)$	PSD
$500 \leq f < 1400$	-80	PSD
$1400 \leq f < 5000$	$-80 - 27.226 \times \log_2(f / 1400)$	PSD
$5000 \leq f < 29040$	-120	PSD
$29040 \leq f < 30175$	-120	PSD

Note 1: PSD requirements for Equipment Class 3b are contained in AS/ACIF S002:2008 and this Standard.

Note 2: Refer to Figure 1 for a representation of the PSD.

Note 3: Below 300 kHz the peak PSD shall be measured with a 100 Hz resolution bandwidth. Above 300 kHz the peak PSD shall be measured with a 10 kHz resolution bandwidth.

PARTICIPANTS

The Working Committee responsible for the revisions made to this Standard consisted of the following organisations:

Organisation	Membership
ACCC	Non-Voting
ACMA	Non-Voting
Adtran Networks	Voting
Agile	Voting
Alcatel-Lucent	Voting
Austest	Voting
Cisco Systems	Voting
Ericsson	Voting
NEC Australia	Voting
Nokia Siemens Networks	Voting
Primus	Voting
SingTel Optus	Voting
Telecom NZ	Voting
Telstra	Voting

This Working Committee was chaired by Peter Cooke. James Duck of Communications Alliance Ltd provided project management support.

Communications Alliance was formed in 2006 to provide a unified voice for the Australian communications industry and to lead it into the next generation of converging networks, technologies and services.

In pursuing its goals, Communications Alliance offers a forum for the industry to make coherent and constructive contributions to policy development and debate.

Communications Alliance seeks to facilitate open, effective and ethical competition between service providers while ensuring efficient, safe operation of networks, the provision of innovative services and the enhancement of consumer outcomes.

It is committed to the achievement of the policy objective of the *Telecommunications Act 1997* - the greatest practicable use of industry self-regulation without imposing undue financial and administrative burdens on industry.



Published by:
**COMMUNICATIONS
ALLIANCE LTD**

Level 9
32 Walker Street
North Sydney
NSW 2060 Australia

Correspondence
PO Box 444
Milsons Point
NSW 1565

T 61 2 9959 9111
F 61 2 9954 6136
TTY 61 2 9923 1911
E info@commsalliance.com.au
www.commsalliance.com.au
ABN 56 078 026 507

Care should be taken to ensure the material used is from the current version of the Standard or Industry Code and that it is updated whenever the Standard or Code is amended or revised. The number and date of the Standard or Code should therefore be clearly identified. If in doubt please contact Communications Alliance

ISBN: 1 74000 380 2