




# Wholesale Telephony Access Service

Communications Alliance  
NBN Project Update

June 2010

## Agenda



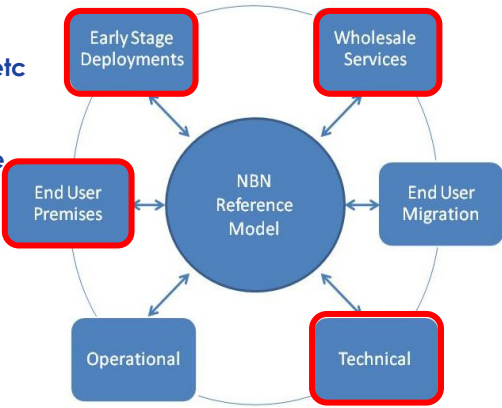
Last 6 weeks papers...

- Optical Fibre Access
- Passive Infrastructure – Conduits etc
- End User Premises

**Wholesale Telephony Access Service**

- End-to-end model
- End-User View
- Roles & Responsibilities

Q & A



```
graph TD; ESD[Early Stage Deployments] <--> WS[Wholesale Services]; WS <--> EUM[End User Migration]; EUM <--> T[Technical]; T <--> O[Operational]; O <--> EUP[End User Premises]; EUP <--> ESD; ESD <--> NBN((NBN Reference Model)); WS <--> NBN; EUM <--> NBN; T <--> NBN; O <--> NBN; EUP <--> NBN;
```

## Technical group Optical Access Infrastructure

### Overview of "Layer 1" Passive Technical Standards

Feb 2010 – Draft for Comment – Technical Standards
Mar 2010 – Release 1 – Technical Standards
<b>20 Apr 2010 – Draft for Comment – Optical Access</b>
<b>10 June 2010 – Release 1 – Optical Access</b>

Communications Alliance – DRAFT NBN Optical Access – Apr 2010

- Model Network & Terminology
- Optical Budget
- Connectorisation
- Optical Testing
- Robustness
- Future Proof
- Security
- Environmental Sustainability
- IPv6
- References
- Passive Standards

## Early Stage Deployments group "Greenfields" Construction Guidelines

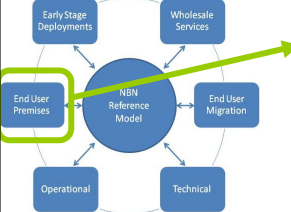
### Overview of "Layer 0" Construction Guidelines

FTTP Planning – Express Conduit
NBN – Fibre Ready Distribution Networks
<b>3 May 2010 – Draft for Comments</b>
<b>31 May 2010 – Release 1 – Guidelines for Greenfields Estates</b>

Communications Alliance - Fibre Ready Distribution Networks – Release 1 – May 2010

- Conduit Size & Dimensioning
- Route Selection
- Shared Trenches
- Dends
- Depth of Cover and Bedding
- Joining and Testing
- Records
- Sealing
- Subducting
- Manholes & Pits

## End User Premises group End User Premises Handbook



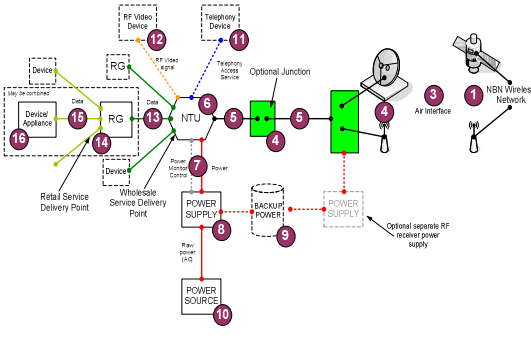
**Premises Installation Practices, Cabling, Technologies**

Mar 2010 – Release 1 - Handbook

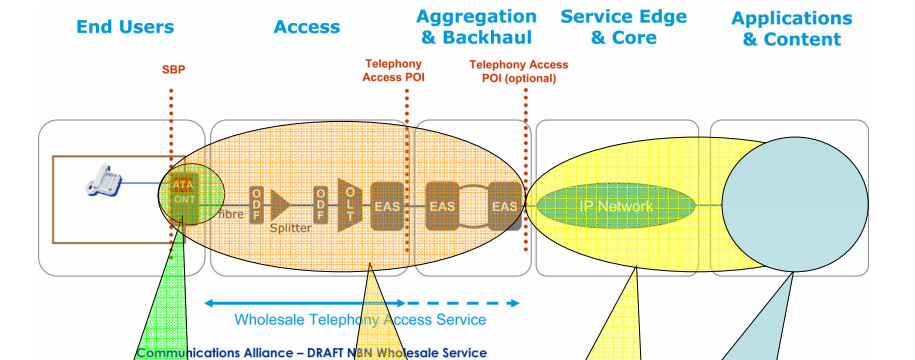
**3 May 2010 – Draft for Comment – Release 2**

**? June 2010 – Release 2 – Handbook**

- Architecture Overview
- Architecture Components
- Architecture – Wireless/Satellite
- Distribution Technologies
- Installation Practices
- Testing & Diagnostics
- Sustainability
- Robustness
- Security
- IPv6
- Future Proofing
- Industry Codes & Practicess



## Wholesale Telephony Access Service



**Port built into NTU – embedded IP Telephony Adapter**

**NBN Area of Responsibility**

**RSP (TSP?) Area of Responsibility**

**RSP softswitch controls features & functionality**

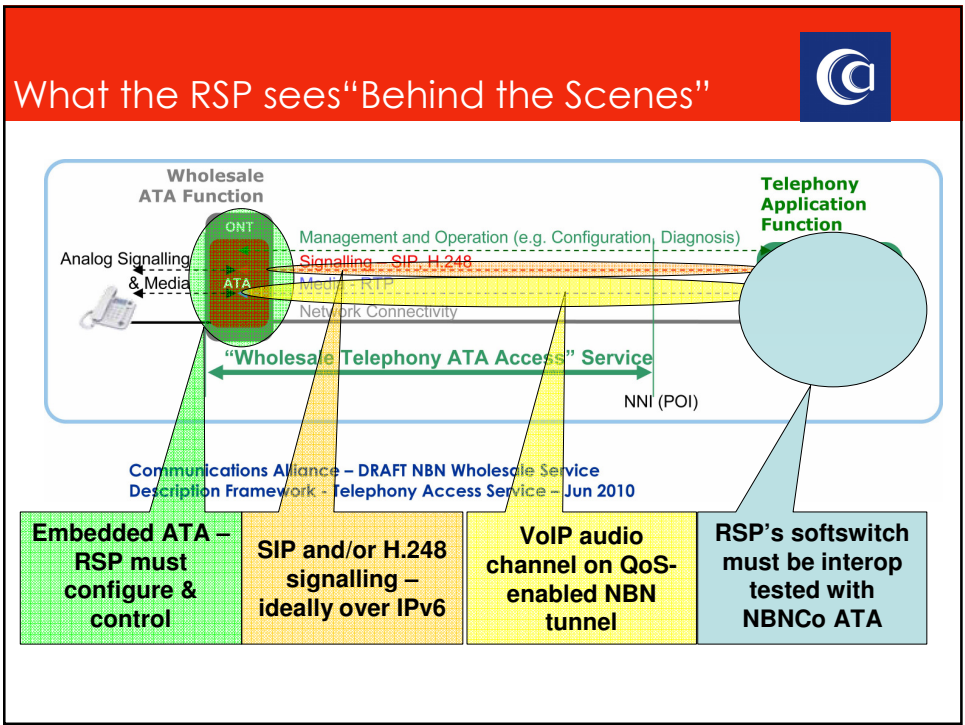
Communications Alliance – DRAFT NBN Wholesale Service Description Framework - Telephony Access Service – Jun 2010


## What the End User Sees....


- Standard PSTN wallplate socket (possibly multiple)
- Plug in existing handset
- Socket connects to their TSP of choice



No real change from today



Responsibilities 		
USER	NBN	Service Provider
Choose TSP Dial Numbers Report Problems to TSP Pay TSP (battery?)	ATA Quality/choice ATA Feature set (CLIP, tones, codecs) Diagnose & Repair ATA failures Error-free network between NTU and POI Resilience of Access Network	Allocate Number 000 routing Number Portability Any-to-Any Interconnect (end-user battery?) Bandwidth Management Service Features activation (voicemail, 3-way, call hold, etc) Directory Assistance IPND Audio Performance, Call Performance



## Thankyou

*Paul Brooks*  
 Project Lead  
[pbrooks@layer10.com.au](mailto:pbrooks@layer10.com.au)

<http://www.commsalliance.com.au/Activities/national-broadband-network>